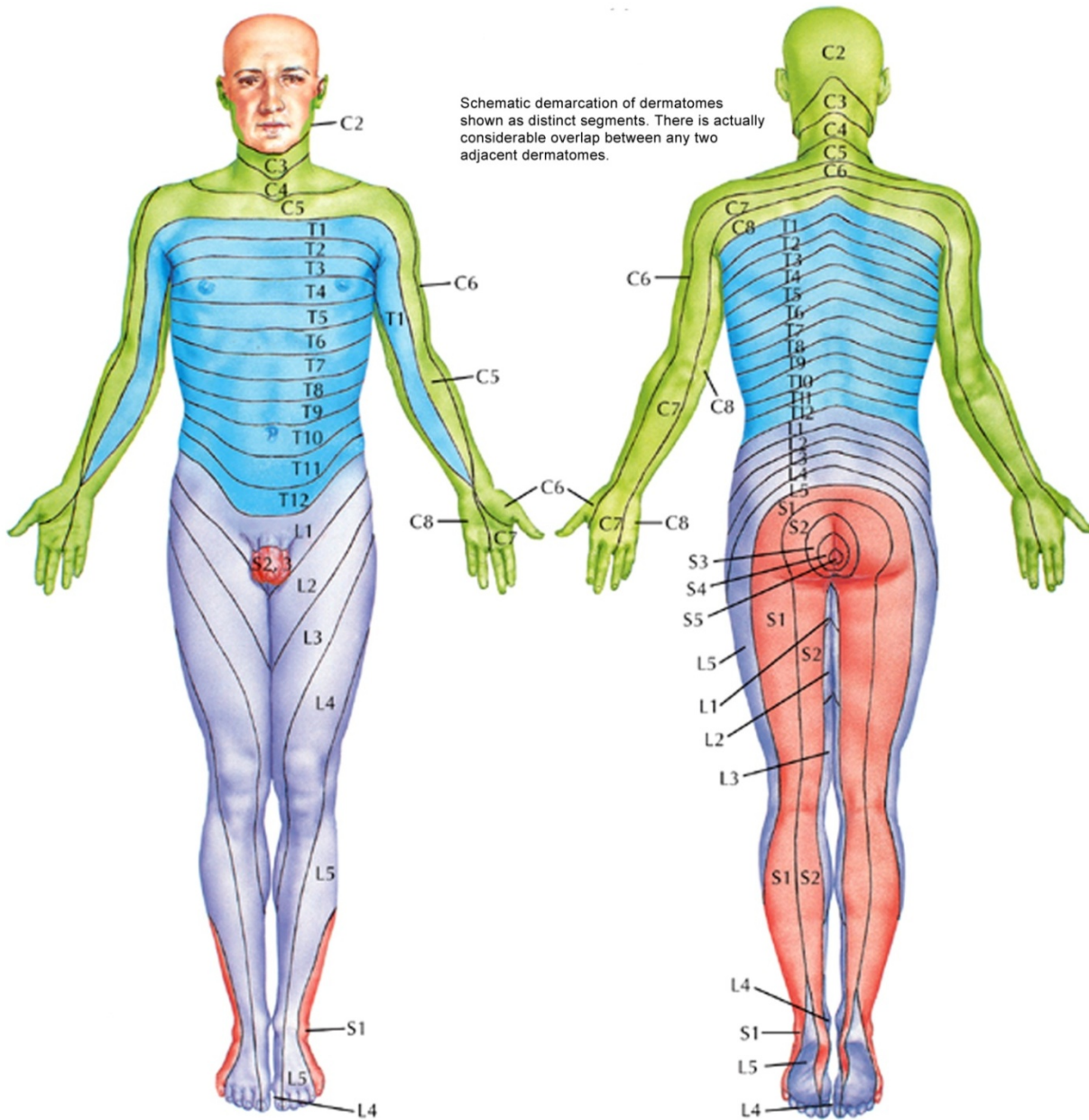


Nerve/Disc Principal Dermatomes

Nerve	Motor Test	Sensation Test
Radial nerve	Wrist extension Thumb extension	Dorsal web space between thumb and index finger
Ulnar nerve	Abduction- little finger	Distal ulnar aspect- little finger
Median nerve	Thumb pinch Opposition of thumb	Distal radial aspect- index finger
Axillary nerve	Deltoid	Lateral arm- deltoid patch on upper arm
Musculocutaneous nerve	Biceps	Lateral forearm

Disc	Root	Reflex	Muscles	Sensation
C ₄ -C ₅	C ₅	Biceps reflex	Deltoid Biceps	Lateral arm Axillary nerve
C ₅ -C ₆	C ₆	Brachioradialis reflex (Biceps reflex)	Wrist Extension Biceps	Lateral forearm Musculocutaneous nerve
C ₆ -C ₇	C ₇	Triceps reflex	Wrist flexors Finger Extension Triceps	Middle finger
C ₇ -T ₁	C ₈		Finger Extension Hand Intrinsic	Medial forearm Med. ant. branch. Cutaneous nerve
T ₁ -T ₂	T ₁		Hand Intrinsic	Medial arm Med. branch. Cutaneous nerve
L ₃ -L ₄	L ₄	Patellar reflex	Anterior tibialis	Medial leg and medial foot
L ₄ -L ₅	L ₅	None ? Internal hamstring	Extensor hallucis longus Peroneus longus	Lateral leg and dorsum of foot
L ₅ -S ₁	S ₁	Achilles Internal hamstring External hamstring	Gastrocnemius	Sole of foot Lateral foot



Levels of principal dermatomes

- C5 Clavicles
- C5,6,7 Lateral parts of upper limbs
- C8, T1 Medial sides of upper limbs
- C6 Thumb
- C6,7,8 Hand
- C8 Ring and little fingers
- T4 Level of nipples

- T10 Level of umbilicus
- T12 Inguinal or groin regions
- L1,2,3,4 Anterior and inner surfaces of lower limbs
- L4,5, S1 Foot
- L4 Medial side of great toe
- S1, 2, L5 Posterior and outer surfaces of lower limbs
- S1 Lateral margin of foot and little toe
- S2,3,4 Perineum